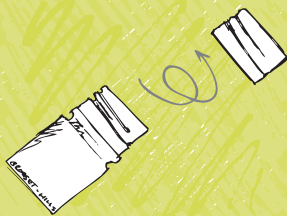


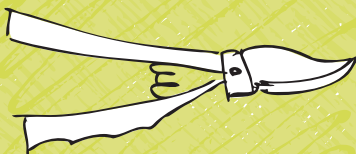
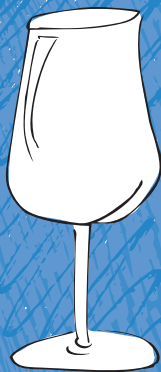
# mesh

EDEN VALLEY RIESLING

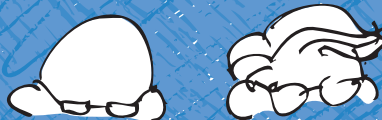


two vineyards

6 separate fermentations



collaboration



meshnifico!

“This single word **represents** so much of the **philosophy** behind the **wine** - the **weaving** together of **ideas** & the **combining** of **skills** and **knowledge**”

said Robert Hill Smith.

## mesh Eden Valley Riesling

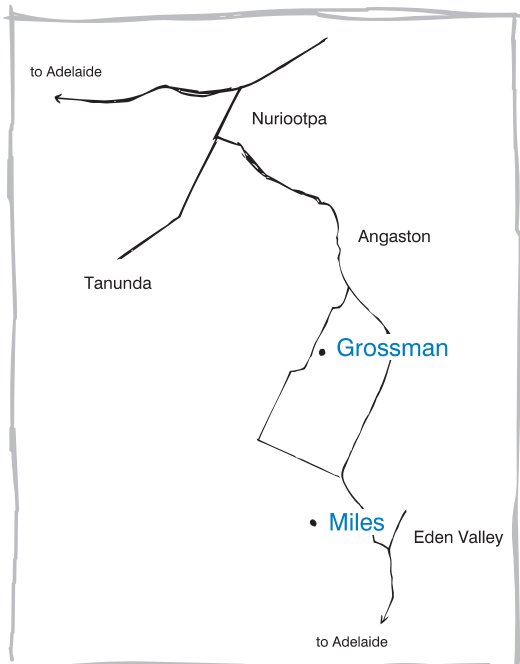
Born of occasional musings between Robert Hill Smith from Australia's oldest family owned winery, Yalumba and Clare winemaker Jeffrey Grosset, the essence of the project is two of Australia's best known Riesling makers working together to elevate the status of both Riesling and South Australia's Eden Valley. The project also offers a forum in which both winemakers can share ideas, debate and discuss.

Jeffrey Grosset believes the partnership offers an irresistible opportunity to create a truly unique wine. “I'm convinced that we have been able to achieve more in quality terms by working together and sharing our knowledge. The chance to contribute to the reputation of the region and the variety is very exciting and the fact that Robert and I share a passion for Riesling is, for me, what makes this project so special”, he said.

*‘It is hard to comprehend that the Eden Valley has a 150 year history of growing and making Riesling, and only recently has the world begun to notice how good these dry Rieslings can be.’*

[Robert M. Parker Jr., The Wine Advocate (USA), October 2005]

Two Eden Valley vineyard blocks have been carefully selected for this joint adventure, chosen for their potential to deliver consistent fruit most in keeping with the unique characters of Eden Valley and the co-agreed wine style and philosophy. Both blocks are within a few kilometres of each other and are located at a similar altitude of 420 - 430 metres above sea level; unique for Eden Valley which is famous for its multitude of steep hills and deep valleys.





Grosset



Hill Smith



Jeffrey Grosset requires no introduction. His Polish Hill and Watervale Rieslings are highly prized Australian wines. His immensely disciplined approach to winemaking and meticulous attention at every stage led Jeffrey to being voted Riesling Winemaker of the Year at the Riesling Summit II in Hamburg in 1998. In 2005 Jeffrey was listed in Wine and Spirits magazine USA as one of the fifty most influential winemakers in the world.

Robert Hill Smith and his forebears' involvement and expertise in Eden Valley spans several decades - beginning with the re-establishment of the historic Pewsey Vale Estate Riesling vineyard in 1961. Robert's knowledge of the various sub-regions of Eden Valley is legendary. This was critical in matching vineyard sites to the now distinctive mesh style profile.



## From the press....

...*medium straw-colored* with an alluring bouquet of *minerals, honeysuckle, spring flowers,* and *lemon-lime*. This leads to a medium-bodied wine made in a *racy* style with *crisp*, uplifting acidity, intense flavors, and a lengthy finish...

[Robert Parker, Wine Advocate (USA), October, 2007, mesh 2007]

Eden Valley grapes that smack of *fresh, tropical fruits* soaked in *lime*, as well as a comfy *crispness* of laundered linen. Perfect for summer on the deck.

[Tony Love, The Advertiser Magazine(Aust), November 2006, mesh 2006]

...*brehtaking balance* of *power* and *precision*; clean, lightly *citrus* aromas lead to a palate of finesse. Not too steely now, but it's an ideal *drink-or-cellar* proposition.

[Huon Hooke, Gourmet Traveller WINE (Aust), June 2005, mesh 2004]

... archetypal *Eden Valley Riesling* that's delicate enough, but it has a muscular, mineral backbone underneath the *floral, citrus* and *apple custard* varietal fruit.

[Cuisine (NZ) Issue 105 Jul 2004, mesh 2003]

... *tightly packed*, with *lively pear* and *mineral flavors* that persist on the finish ...

[Harvey Steiman, Wine Spectator (USA), 25 Feb 2005, mesh 2004]

*Elegant fruit*, lemon citrus and a touch of mineral. Dry, quite oily texture, peachy fruit with some honey, balanced acidity with a *zesty finish*. Excellent food wine. [Decanter (UK) Jun 2003, mesh 2002]

...*lasting flavour* or *lime*, young and direct...earthy, talclike edge of *acidity*...

[Wine & Spirits (USA), October 2008, mesh 2007]

...There's something of the wild, mineral and *exotic* and its heady perfume of *floral, citrus* and *stonefruit* aromas. Long, *tight* and *tangy*, its clear lime juice palate builds towards a crescendo of flavour prior to a taut and *mineral finish* of wonderful length...

[Jeremy Oliver, On Wine (Aust), 6 October, 2006, mesh 2005]

"A good idea, *two Riesling vineyards* in Eden Valley, alternate rows *hand picked* in two bucket colours yellow and blue, *6 seperate ferments*..."

# mesh

EDEN VALLEY RIESLING



aug08